

Crowns

Why are teeth crowned?

Crowns can be the ideal restoration for teeth. The main reasons why we use a crown are as follows:

- To strengthen a tooth that has become weakened by having a large filling
- To improve the appearance of discoloured teeth or fillings
- To protect a brittle root filled tooth
- To restore a tooth damaged by an accident
- To help hold a bridge or denture firmly in place

What are crowns made of?

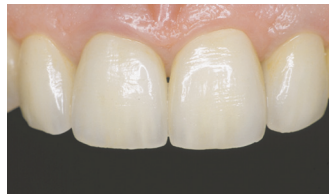
Crowns can be made of a variety of materials and new materials are being continually introduced. Some of the common types are as follows:

Gold alloy crown - gold mixed with other metals to increase its strength

Porcelain bonded to precious metal - porcelain layers are placed over a strong metal base

Porcelain dentine bonded crown - made entirely out of porcelain and bonded onto the tooth surface

All-ceramic crowns - there are a number of brands and types of metal-free, all-ceramic crowns



What is involved?

Crowning a tooth normally requires two visits.



The first visit involves reshaping the outer surface of the tooth/ filling and takes about 45-60 minutes. An impression is taken to allow the laboratory to construct the crown. The tooth is covered with an acrylic temporary crown. If porcelain is being used, then a shade is also taken to match your existing teeth.

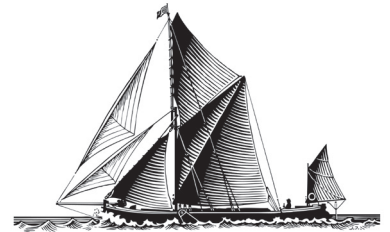
At the shorter, second appointment, the finished crown is tried in, any necessary adjustments made and is then cemented to hold it into position. This visit takes 10-20 minutes.

How long does the treatment take?

It takes about 2 weeks for the crown to be made by the technician

How much do crowns cost?

Crowns vary in cost according to the technician used, the type of material the crown is made from and the degree of difficulty of the case. As a rough guide, the fee for a crown ranges from £395 - £490



KELVIN
HOUSE
DENTAL PRACTICE

Quality Dental Care
for all the Family

Care of your crown

- Crowns themselves do not decay, however care should be taken to brush and floss around the edge of the crown, since this is vulnerable to attack by plaque
- Properly cared for crowns should last for many years. The weakest link is often the amount of sound tooth substance onto which the crown is placed
- You should be able to eat most foods with a crown but avoid things such as sticky toffees as these can pull the crown off. If this happens, make an appointment to have the crown recemented